

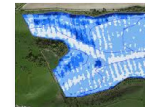
MAXISPREAD T100 7m³

Make:	Landaco "Maxisread"
Size:	10 Tonne
Cubic Metres:	8
Overall Length:	5600mm
Overall Width:	2800mm
Overall Height:	2670mm
Bin Width:	2400mm
Bin Length:	3260mm
Spinners:	Twin - 800mm
Spinner Height:	900mm
Hitch Height:	450mm
Conveyor:	Endless 800mm wide
Wheel Centres:	2100mm
Tyre Size:	23.1 x 26
Tyre Type:	16 Ply R1 Radial
Tyre height x width	1600mm x 600mm
Axle:	Single

OPTIONS AVAILABLE:



L36G
Spinner Deck



Variable Rate
Ready



Seed & Trace
Element Dispenser



Bin Extension
Maximise Capacity



Overdrive
Direct Dumping



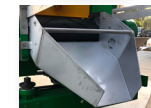
Roll Over
Tarpaulin



Auto Door
Eliminate Waste



Flotation Tyres
Reduce Compaction



Stainless Steel
Grain Chute



Suspension
Load Sharing



Auto Cal Door
With Cameras



Weight Scales
"Know Your Load"

All Landaco Maxisread bulk spreaders feature:

- **Twin Spinners:** Large 800mm dished spinners give the widest, most consistent spreading pattern possible. Spreads urea with exceptional accuracy.
- **Adjustable Spreading Deck:** Allows you to vary the spread pattern to suit your requirements.
- **Cleated Conveyor:** Top quality 800mm wide endless belt.
- **Conveyor Band Design:** Endless belt system with enhanced drive contact, preferred by contractors.
- **Conveyor Drive:** Fully enclosed heavy-duty duplex reduction.
- **Rear Door:** Full width 800mm x 400mm, graduated in 1mm increments for greater control and higher outputs.
- **Chassis:** Robust folded section chassis for stability and long working life.
- **Drive Roller:** Large diameter and crowned, with self-cleaning mechanism.
- **Removable Spinner Deck Assembly:** Allows controlled dumping, and trail laying.